

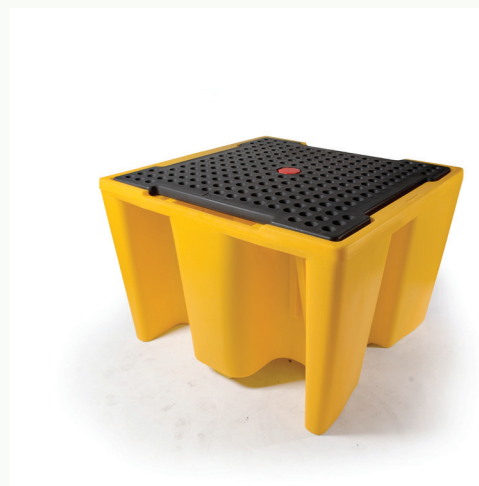
# Datasheet

## Single IBC polyethylene pallet with grating

Suitable to store 1 x 1000 litre IBC container or similar size fluid containers.

The sump under the platform is designed to capture leaks from the stored containers.

- Made of UV resistant, 100% recyclable polyethylene
- Sump capacity: 1120 litre
- Maximum load capacity: 2000kg
- Removable platform with slip resistant texture.
- Forklift pockets
- Compatible with most oils and chemicals



Article-number	Dimension CM	Containment/ sump capacity (LTR)	Maximum load capacity KG	Pack quantity	Weight KG
0504160	145 x 145 x 100	1120	2000	1	95